

Pathology – Pricing

➔ Histology

Single price

- Tumours (≤ 2 anatomic sites)
- Skin punches for dermapathology (irrespective of the numbers of biopsies)
- Endometrial biopsies
- Biopsies of different organs ≤ 3
- Biopsies from gastrointestinal tract (irrespective of the number of samples)
- Lymph nodese (irrespective of the number of samples)

Special stainings are included

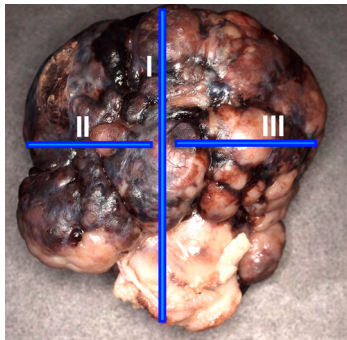
Examples single price

2 separate mammary complexes or 2 mammary complexes
in one sample irrespective of the excision site
(with or without regional lymph node) _____ single price

2 cutaneous tumours/nodules _____ single price

3 liver biopsies _____ single price

1 tumour with up to 3 separate biopsies of the tumour margins _____ single price



simple tumour diagnostic (three trim lines highlighted in blue) e.g. marginally resected tumours (see picture)

Increased effort

- Entire organs (e.g. spleen, liver, testicle, eye etc.)
- Tumours (≥ 3 anatomic sites)
- Decalcifications (e.g. digits, nails, bones)
- Uterus with ovaries
- Biopsies of 4 – 6 organs
- Mammary gland (3 – 5 complexes)
- Tumour with wide margins/tumour bed biopsies
(e.g. mast cell tumour requiring detailed assessment of surgical margins)

As of: June 2025
Image source: Laboklin GmbH & Co. KG

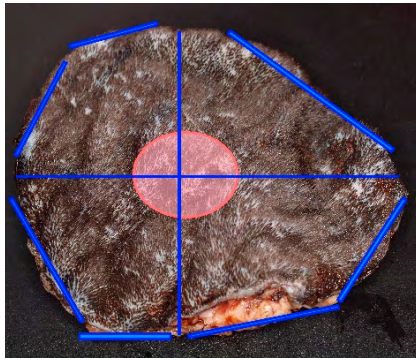
Histology

Examples increased effort

Mammary strip (with or without lymph nodes) _____ increased effort

Mammary strip plus 1 additional complex from the opposite site _____ increased effort

Samples for example from stomach, intestine, pancreas, lymph node _____ increased effort



Detailed assessment of surgical margins, incl. tumour bed biopsies, if requested (trim lines in blue)

Prices for separate clinical problems

- Example double single price: skin tumour and skin biopsies
- Example single price and increased effort price: liver biopsy and entire digit

Immunohistology after pathohistological diagnosis, e.g.

- Lymphoma typing CD3/CD79a
- Expression of Ki-67, c-KIT (mast cell tumour)
- tumour differentiation (among others cytokeratin, melan A, NSE)

up to 4 markers _____ single price

more than 4 markers _____ double price

Cytology

Single price

- 1 anatomic site (≤ 4 smears)
- 2 anatomic sites (≤ 3 smears per site)
- fluid/ lavage + 2 smears

Increased effort

- 1 anatomic site (5 – 6 smears)
- 2 anatomic sites up to 4 smears each
- Multiple fluids
- 2x single price with more smears/fluids

Prices for separate clinical problems

- See histology

Digital cytology

- See „My Lab“: <https://app.laboklin.com/imageAnalysis>

NOTE: For up-to-date prices see current submission forms. We reserve the right to adjust prices for very large entries.