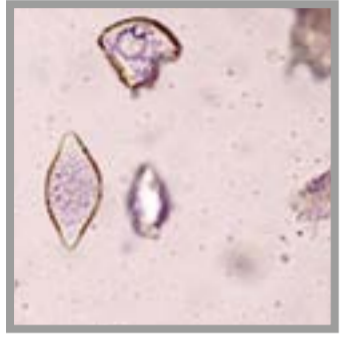


PARASITES

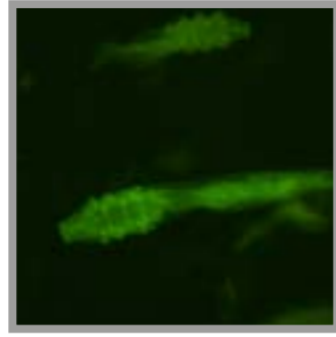
Ectoparasites



Demodex egg



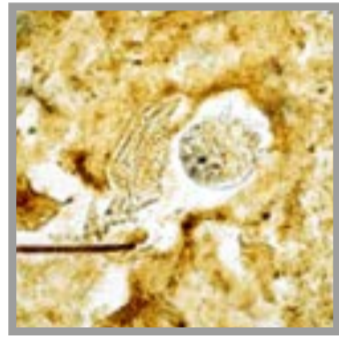
Demodex mite



Demodex
(autofluorescence)



Sarcoptes scabiei



Notoedres cati



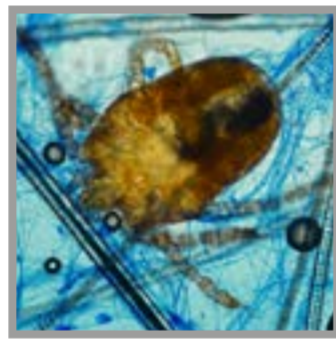
Cheyletiella parasitivorax



Psoroptes cuniculi



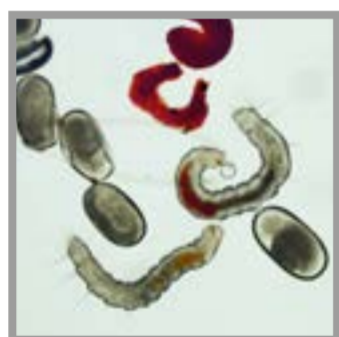
Otodectes spp.



Neotrombicula autumnalis
(background: mycological culture)



Ornithonyssus bacoti



Flea larvae & eggs



Flea



Dog louse

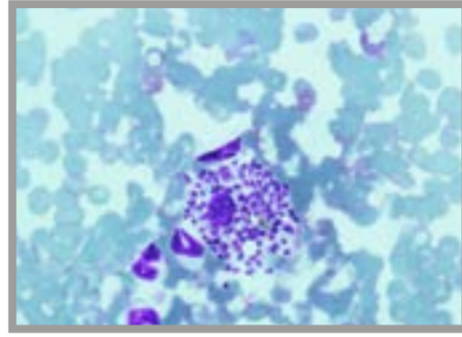


Biting lice

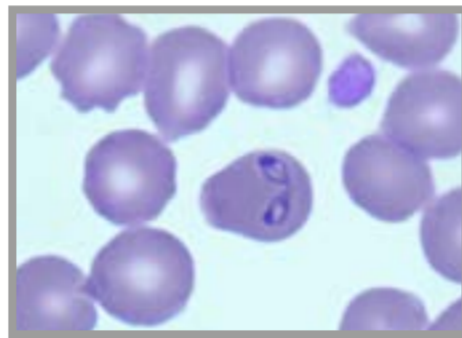


Tick

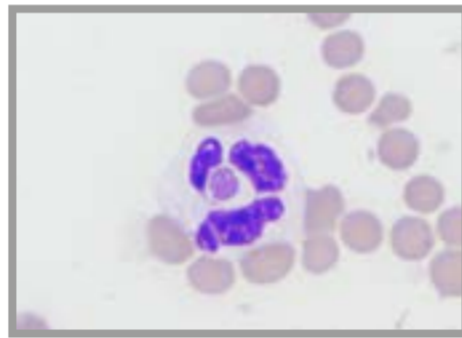
Blood Parasites



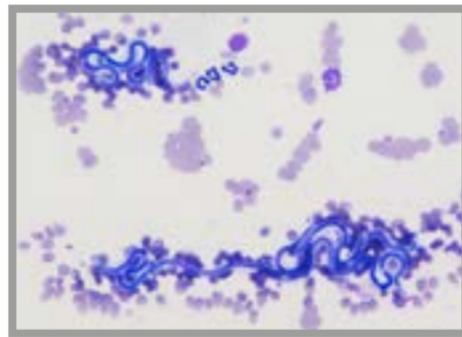
Leishmania spp.



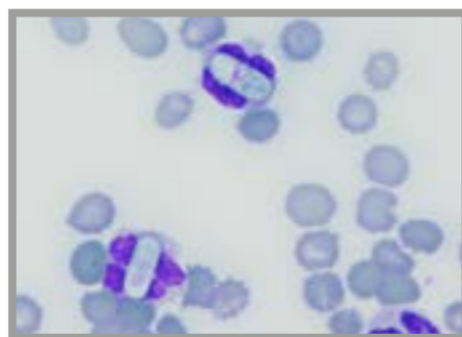
Babesia spp.



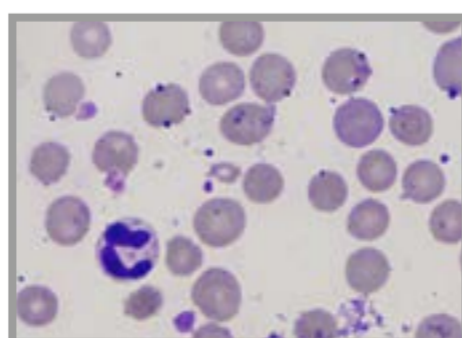
Anaplasma spp.



Microfilariae (e. g. Heartworm)

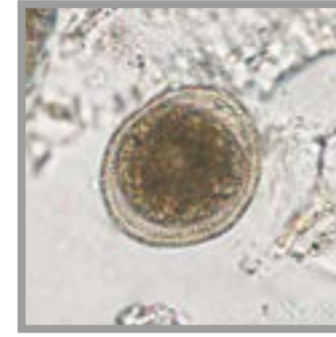


Hepatozoon spp.



Mycoplasma haemofelis

Endoparasites



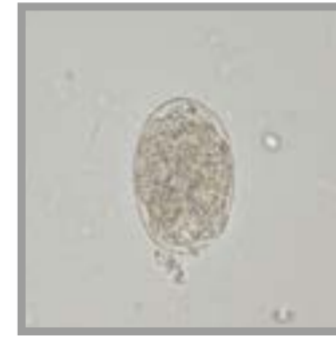
Toxocara spp.



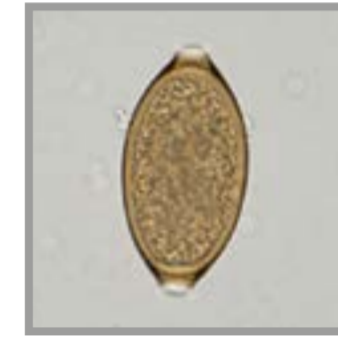
Toxascaris spp.



Parascaris equorum



Ancylostoma spp.



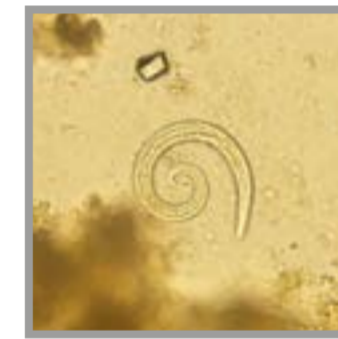
Trichuris spp.



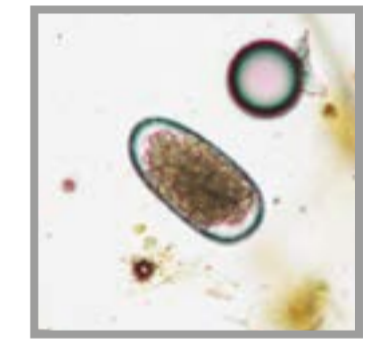
Capillaria spp.



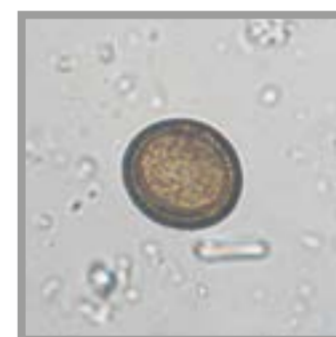
Aelurostrongylus abstrusus



Angiostrongylus spp.



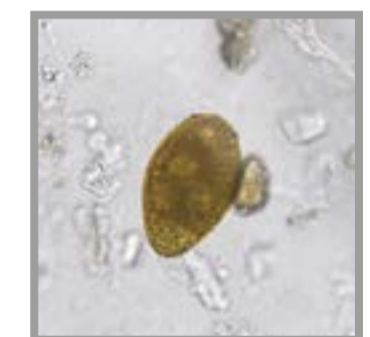
Strongyles egg



Taenia spp.



Dipylidium egg packet



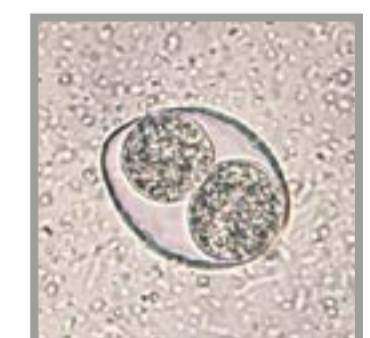
Fasciola hepatica



Giardia cyst



Sarcocystis spp.



Cystoisospora spp.