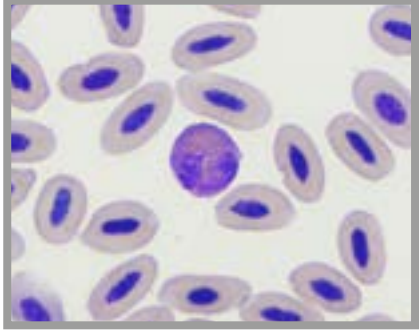
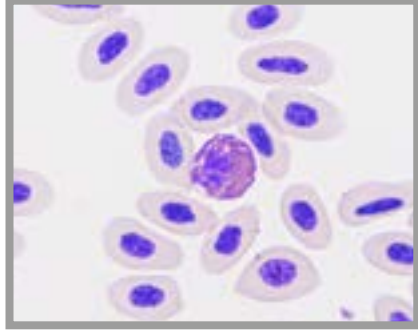


HAEMATOLOGY

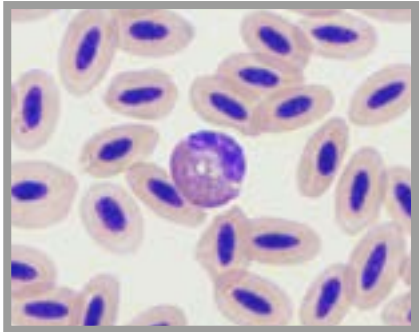
→ Birds



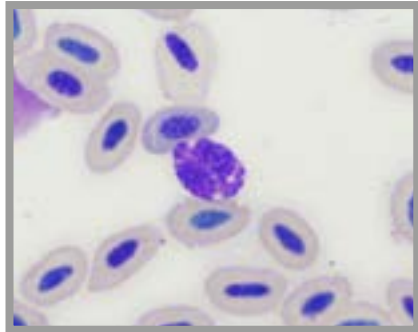
Heterophil granulocyte blue and gold macaw (*Ara ararauna*)



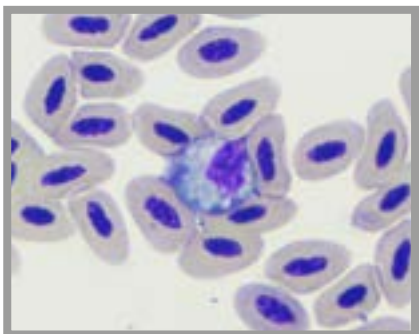
Heterophil granulocyte chicken (*Gallus gallus domesticus*)



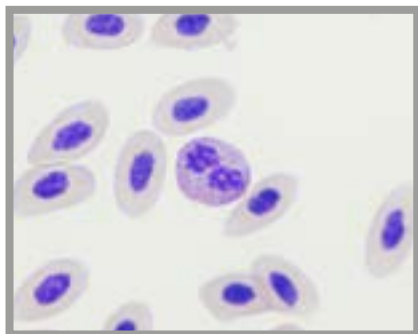
Heterophil granulocyte gerfalcon (*Falco rusticolus*)



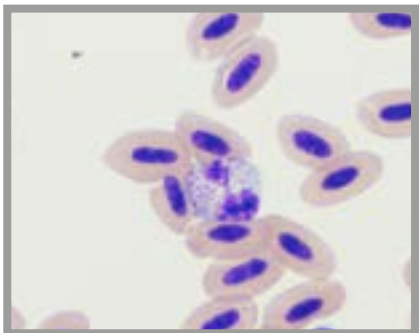
Eosinophil granulocyte blue and gold macaw (*Ara ararauna*)



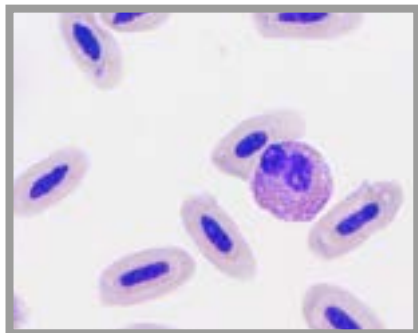
Eosinophil granulocyte African gray parrot (*Psittacus erithacus*)



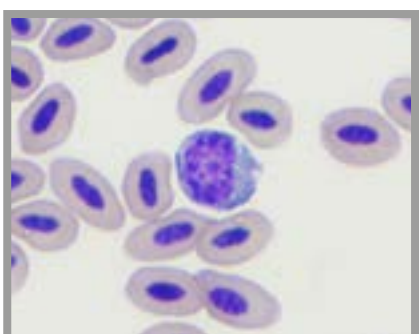
Eosinophil granulocyte chicken (*Gallus gallus domesticus*)



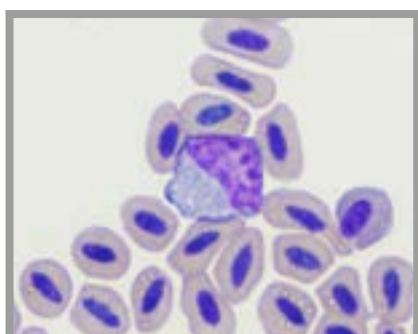
Eosinophil granulocyte gerfalcon (*Falco rusticolus*)



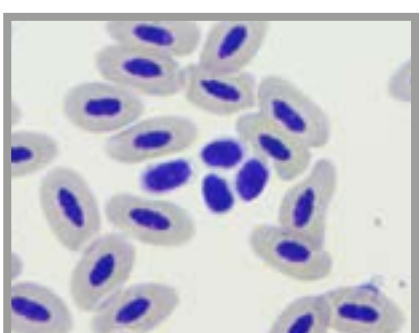
Eosinophil granulocyte white-tailed eagle (*Haliaeetus albicilla*)



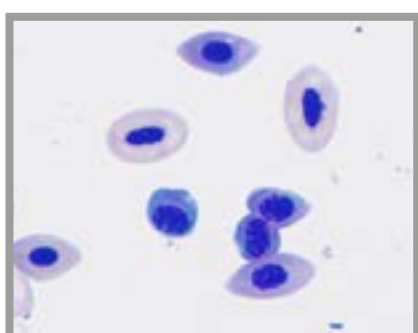
Lymphocyte blue and gold macaw (*Ara ararauna*)



Monocyte blue and gold macaw (*Ara ararauna*)

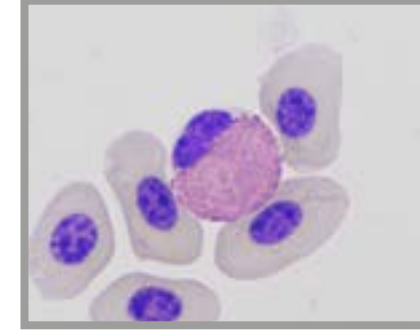


Thrombocyte African gray parrot (*Psittacus erithacus*)

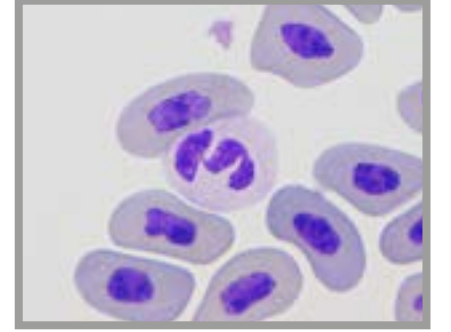


Immature erythrocytes African gray parrot (*Psittacus erithacus*)

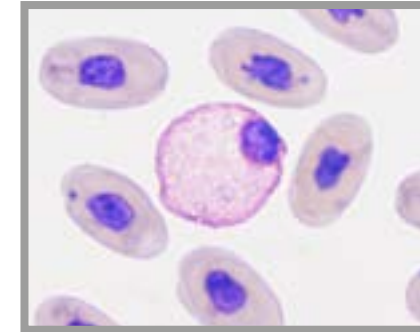
→ Reptiles



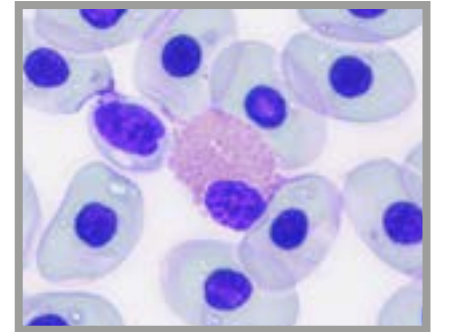
Heterophil granulocyte Hermann's tortoise (*Testudo hermanni*)



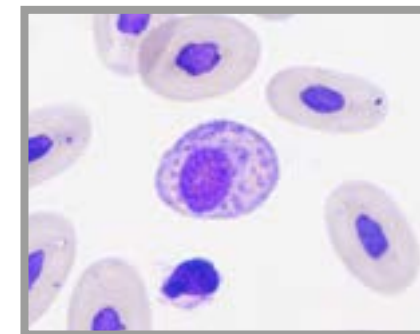
Heterophil granulocyte veiled chameleon (*Chamaeleo calyptatus*)



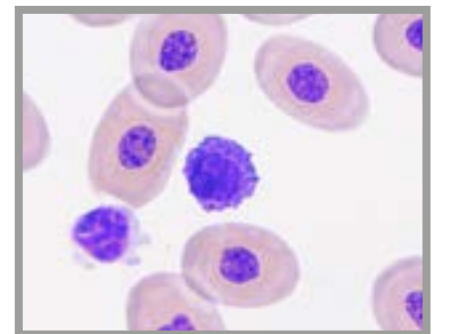
Heterophil granulocyte common tree boa (*Corallus hortulanus*)



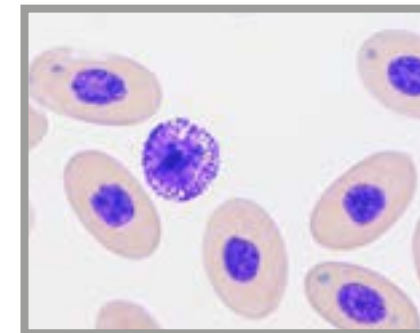
Eosinophil granulocyte box turtle (*Terrapene carolina*)



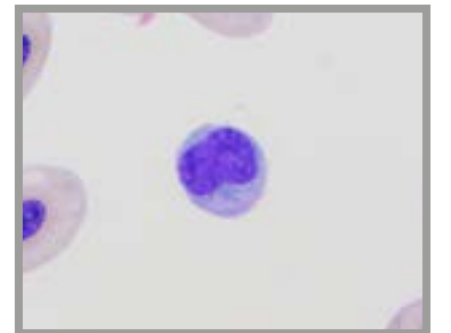
Eosinophil granulocyte bearded dragon (*Pogona vitticeps*)



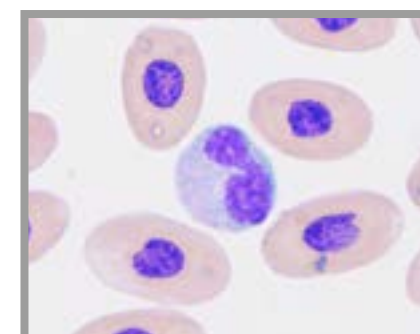
Eosinophil granulocyte western diamondback rattlesnake (*Crotalus atrox*)



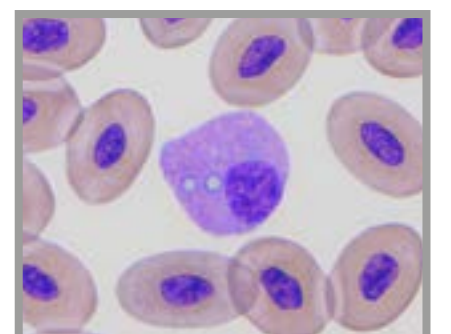
Basophil granulocyte box turtle (*Terrapene carolina*)



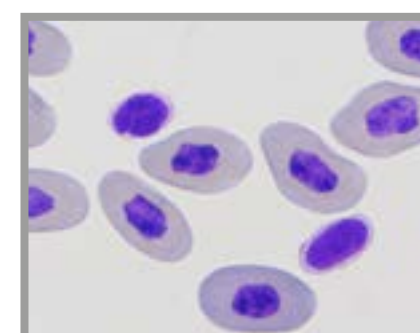
Lymphocyte Hermann's tortoise (*Testudo hermanni*)



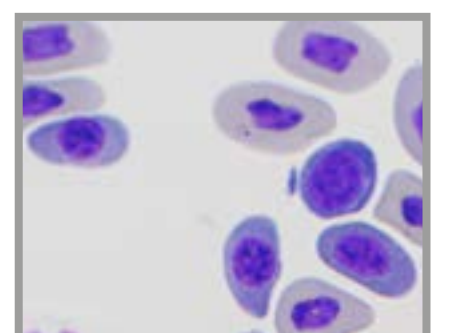
Monocyte box turtle (*Terrapene carolina*)



Azurophil granulocyte western diamondback rattlesnake (*Crotalus atrox*)

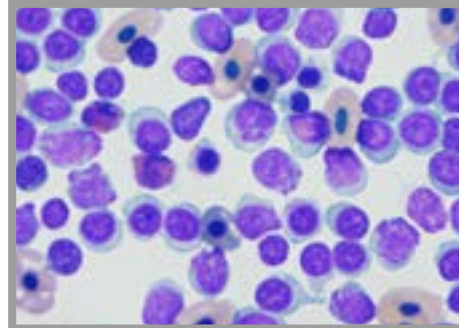


Thrombocytes veiled chameleon (*Chamaeleo calyptatus*)

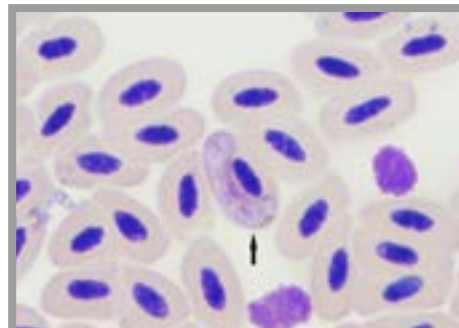


Immature erythrocytes veiled chameleon (*Chamaeleo calyptatus*)

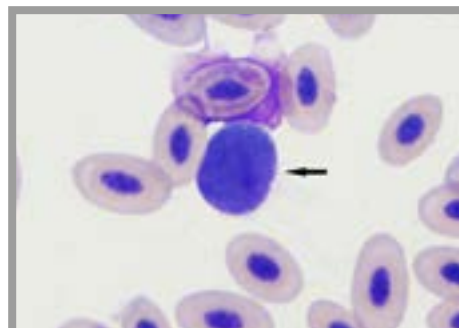
Clinical cases



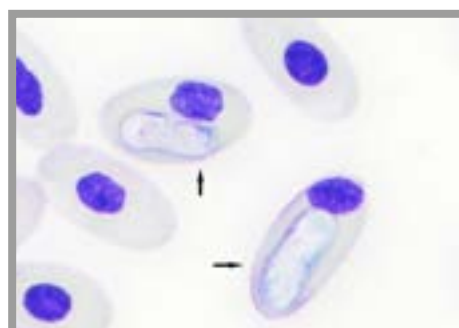
Lymphocytic leukaemia Indian runner duck (*Anas platyrhynchos domesticus*)



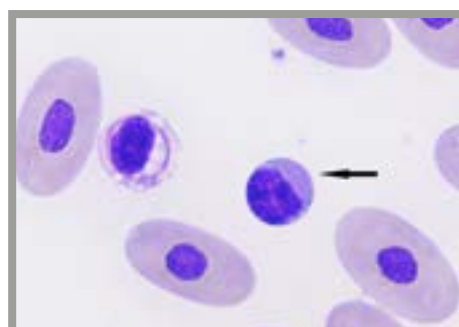
Hemoproteus spp. yellow-legged gull (*Larus michahellis*)



Leukocytozoon spp. common buzzard (*Buteo buteo*)



Hemolivia spp. spur-thighed tortoise (*Testudo graeca*)



Inclusion body disease (IBD) Boa constrictor (*Boa constrictor*)

As of: September 2022, Picture credits: Laboklin