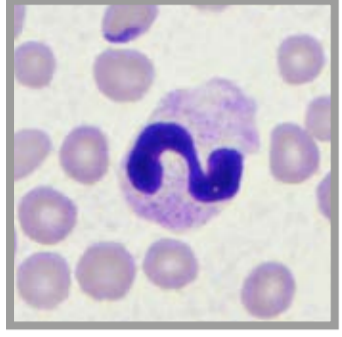
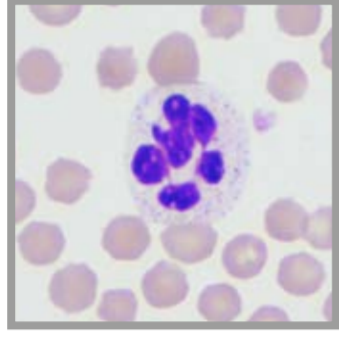


HAEMATOLOGY

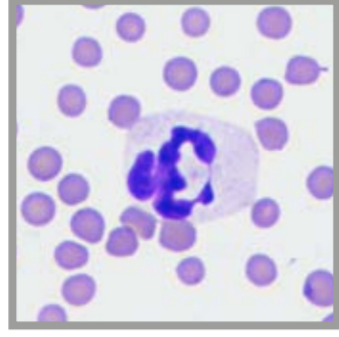
→ Farm animals



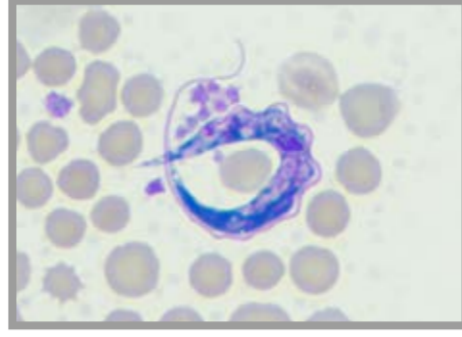
Segmented neutrophil granulocyte, bovine



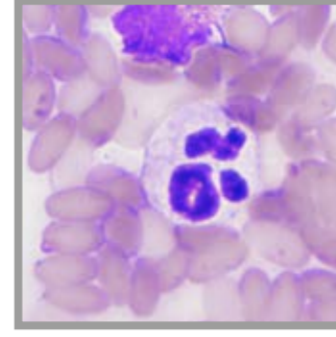
Segmented neutrophil granulocyte, sheep



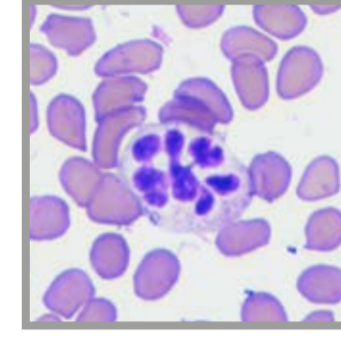
Segmented neutrophil granulocyte, goat



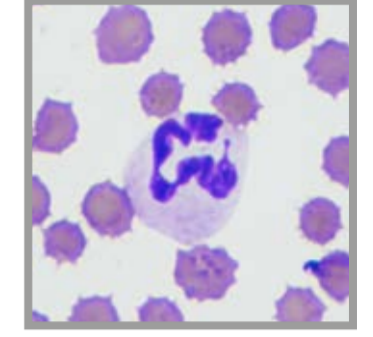
Trypanosomes, bovine



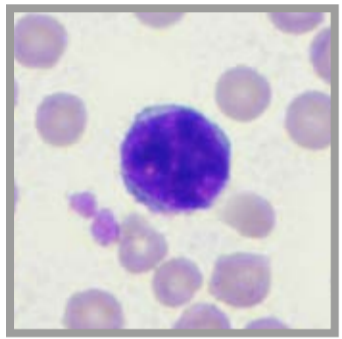
Segmented neutrophil granulocyte, alpaca



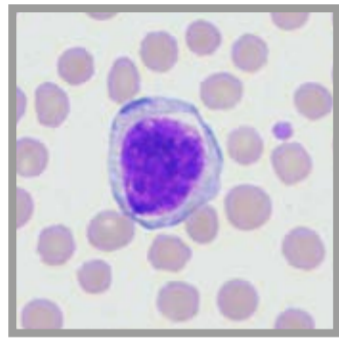
Hypersegmented neutrophil granulocyte, reindeer



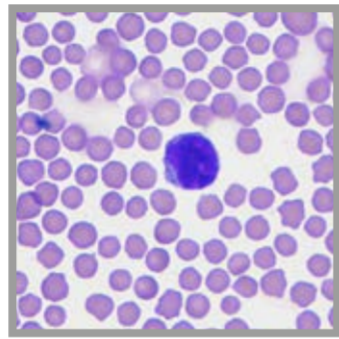
Segmented neutrophil granulocyte, pig



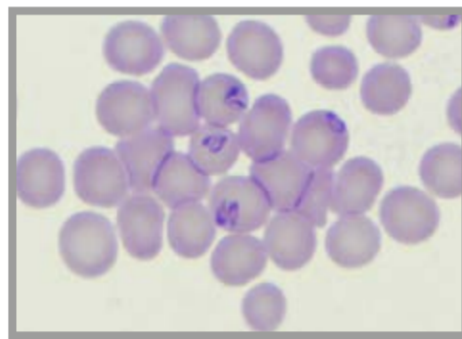
Standard lymphocyte, bovine



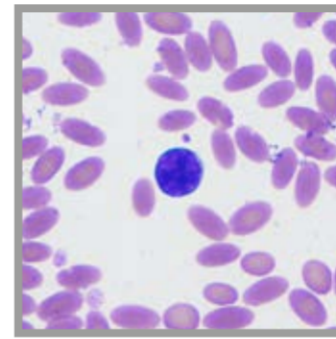
Reactive lymphocyte, sheep



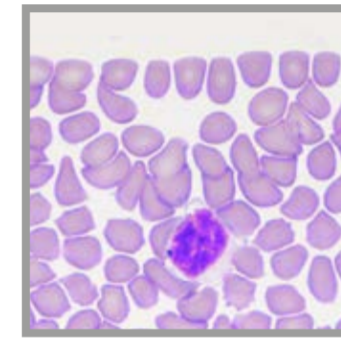
Standard lymphocyte, goat



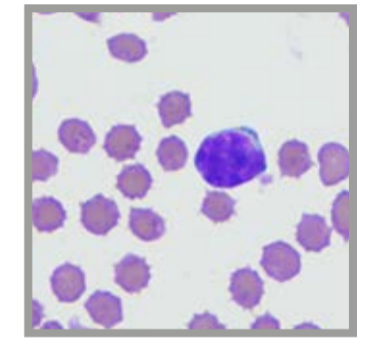
Babesia, bovine



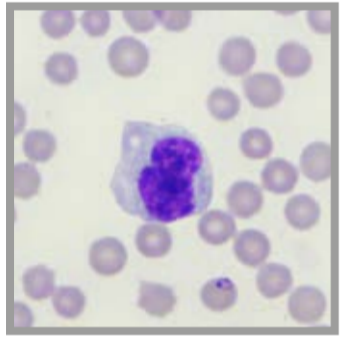
Standard lymphocyte, alpaca



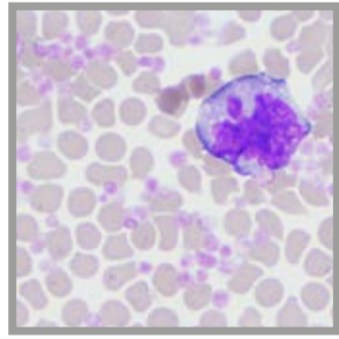
Standard lymphocyte, reindeer



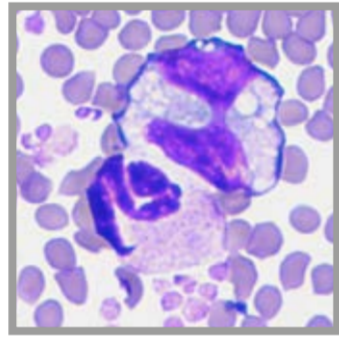
Standard lymphocyte, pig



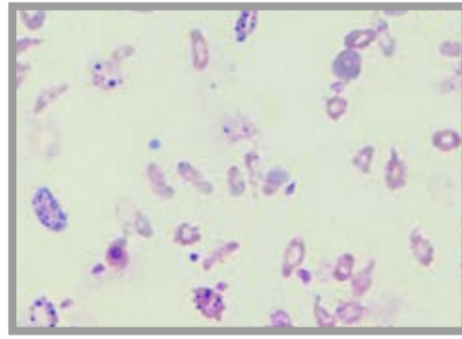
Activated monocyte, bovine



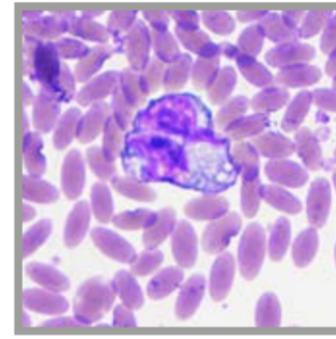
Activated monocyte, sheep



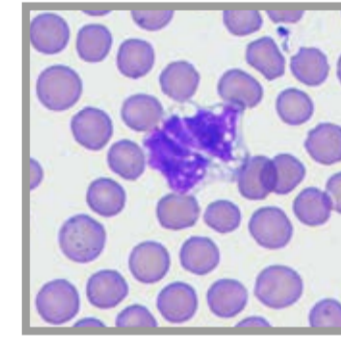
Activated monocyte (top), segmented neutrophil granulocyte (bottom), goat



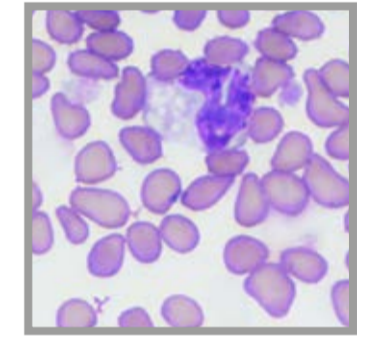
Eperythrozoon, sheep



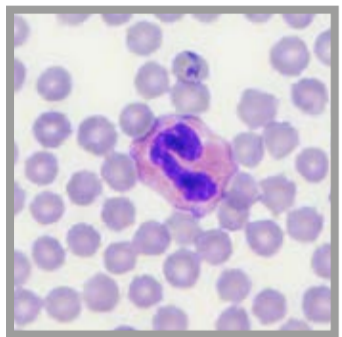
Activated monocyte, alpaca



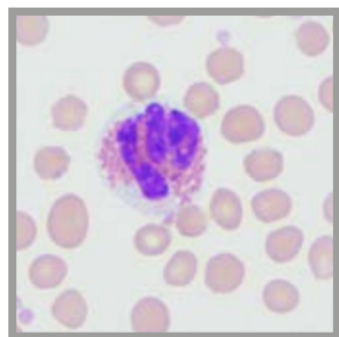
Activated monocyte, reindeer



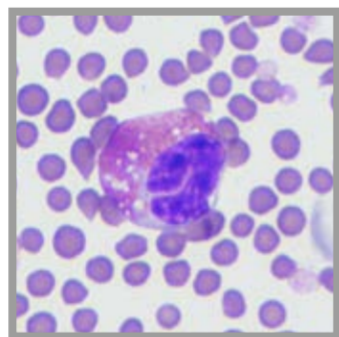
Activated monocyte, pig



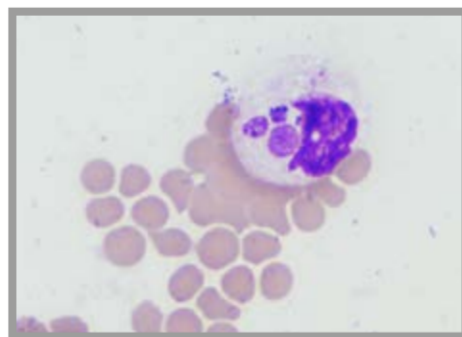
Activated monocyte, pig



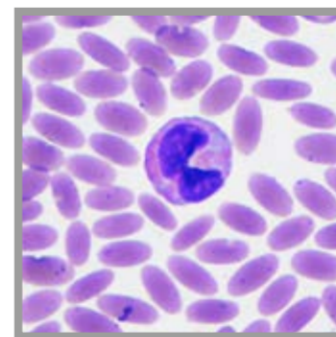
Eosinophil granulocyte, sheep



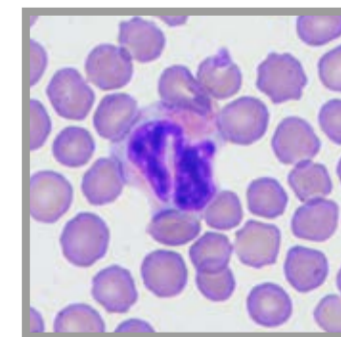
Eosinophil granulocyte, goat



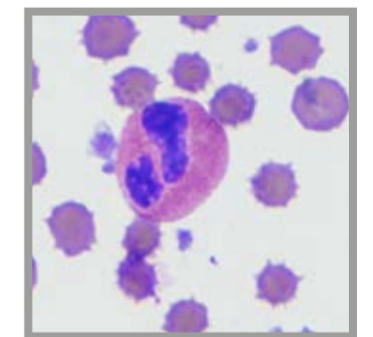
Anaplasma, bovine



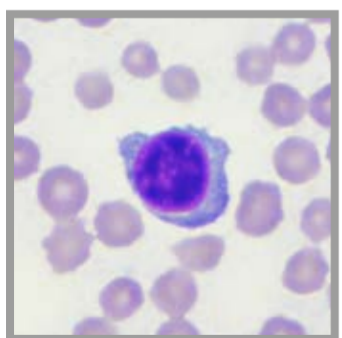
Eosinophil granulocyte, alpaca



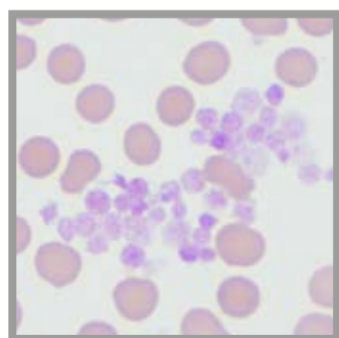
Eosinophil granulocyte, reindeer



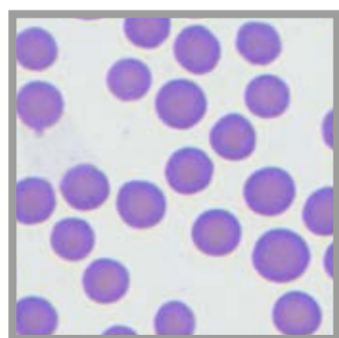
Eosinophil granulocyte, pig



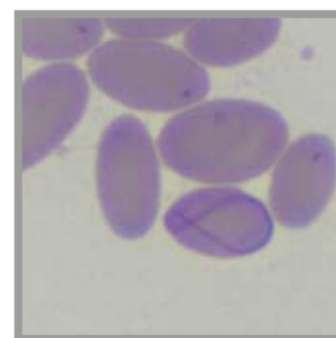
Reactive lymphocyte, bovine



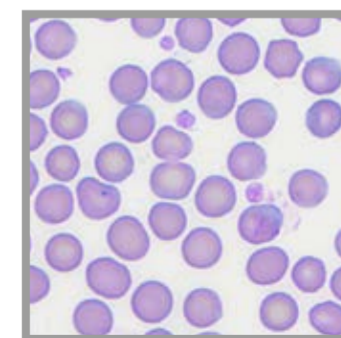
Platelet aggregate, sheep



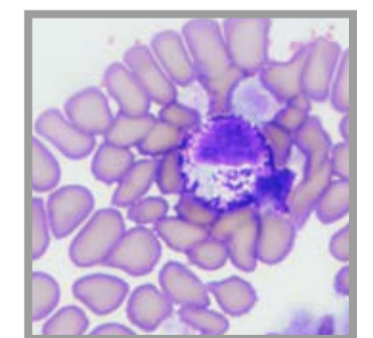
Erythrocytes, goat



Erythrocyte with Cabot-rings, alpaca



Erythrocyte, reindeer



Basophil granulocyte, pig

As of: Juli 2024, Picture credits: Laboklin