

DERMATOLOGICAL PREPARATIONS

→ Sampling



Impression smear
Especially for oozing skin conditions

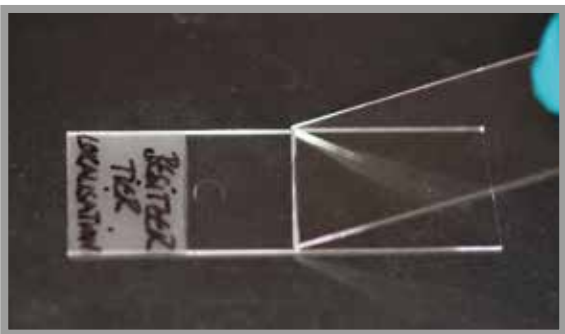


Skin scraping
Especially for the detection of parasites



Fine-needle biopsy
With or without aspiration (pustules or masses)

→ Preparation



Smear

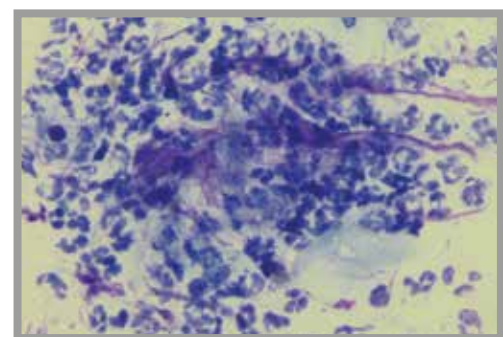


Air-dry

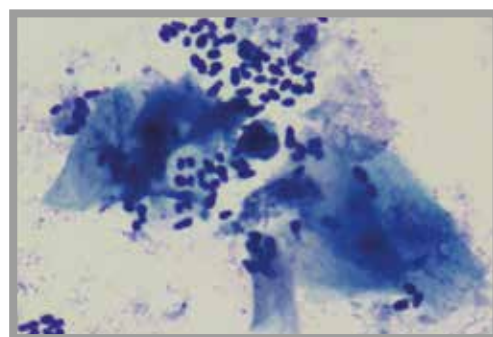


Stain
Rapid stain, e.g. Diff-Quick

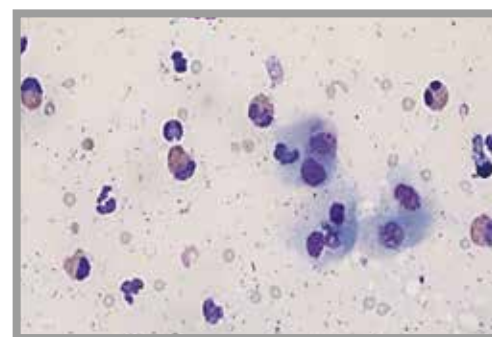
→ Clinical and Microscopic Diagnosis



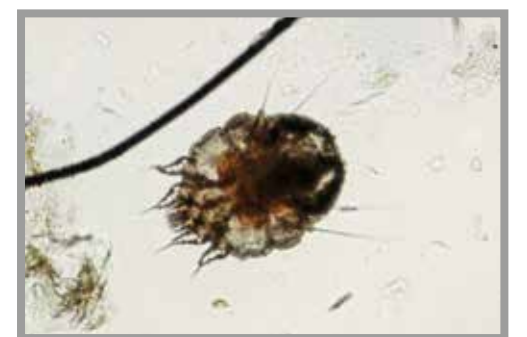
Pyoderma
Degenerate neutrophils and bacterial cocci



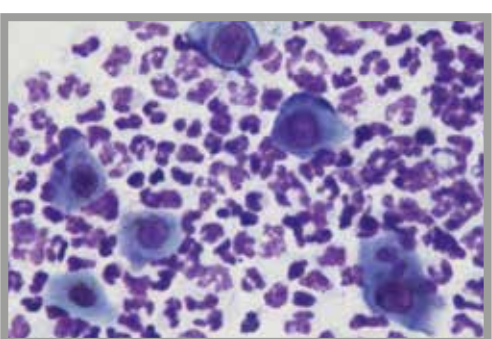
Malassezia dermatitis
Malassezia and keratin flakes



Eosinophilic granuloma, cat
Eosinophils and squamous epithelial cells



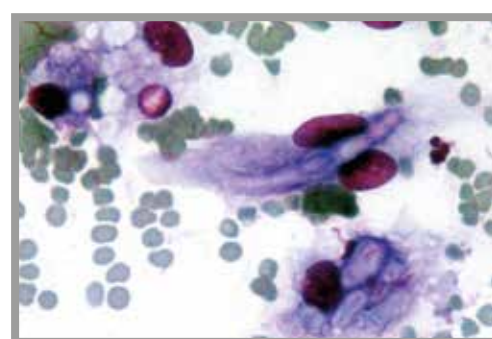
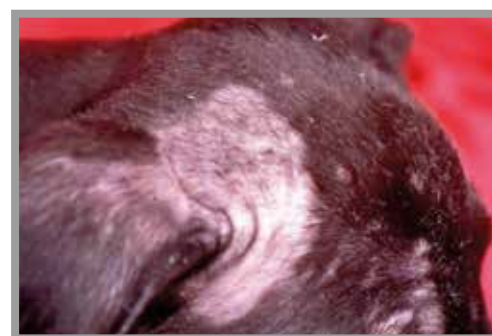
Sarcoptic mange



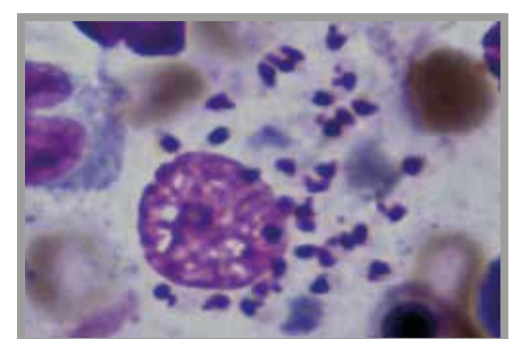
Pemphigus foliaceus
Acantholytic cells and neutrophils



Demodicosis
Demodex mites



Dermatophytosis
Fungal filaments



Cutaneous leishmaniasis
Macrophage with *Leishmania*