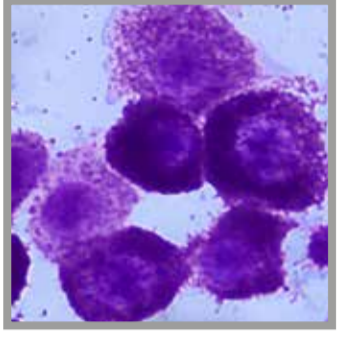
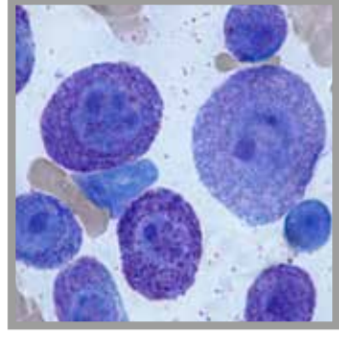


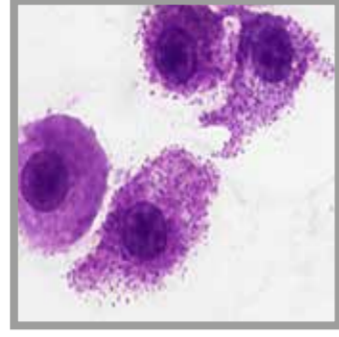
CYTOLOGY



Mast cell tumour, well differentiated, dog

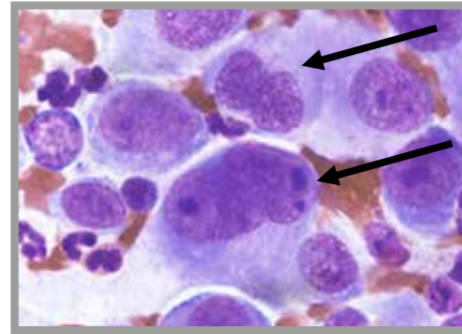


Mast cell tumour, poorly differentiated, dog

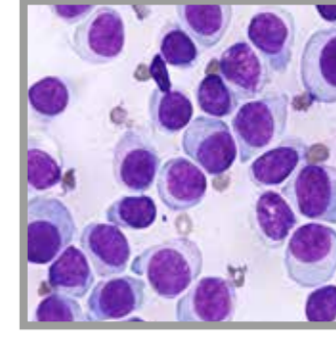


Mast cell tumour, cat

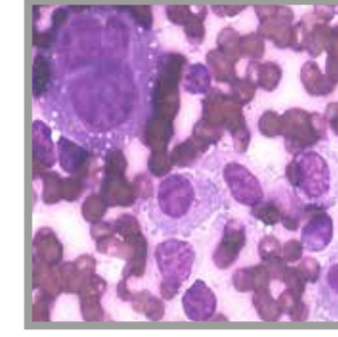
General criteria of malignancy



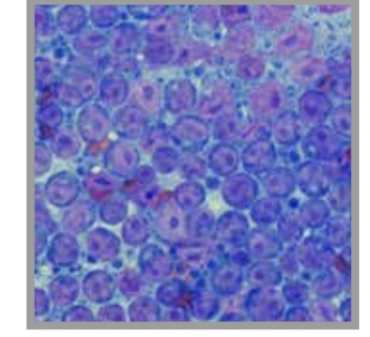
Multinucleation (arrow), anisocytosis and anisokaryosis



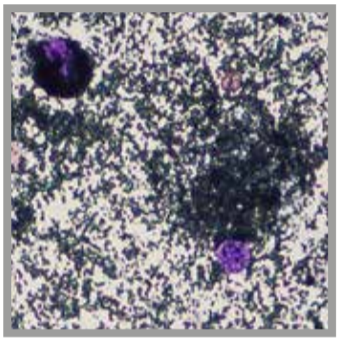
Histiocytoma, dog



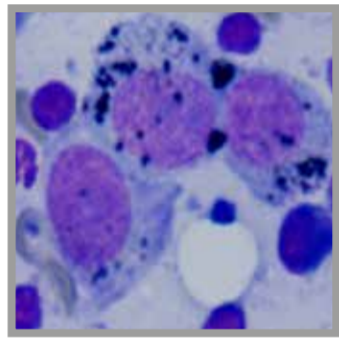
Histiocytic sarcoma, dog



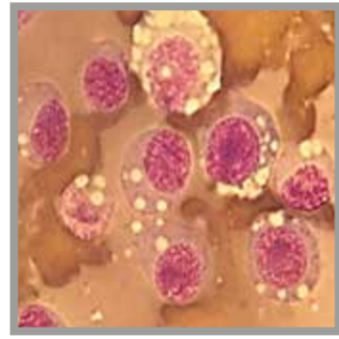
Lymphoma, dog



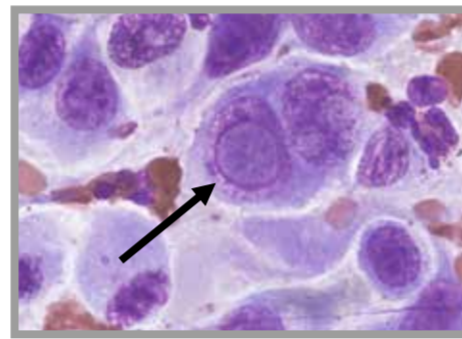
Melanocytoma, dog



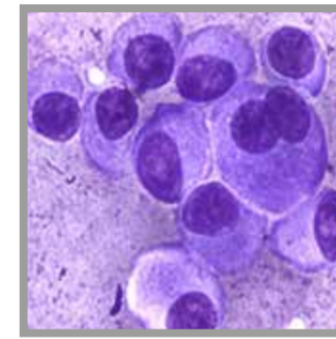
Malignant melanoma, dog



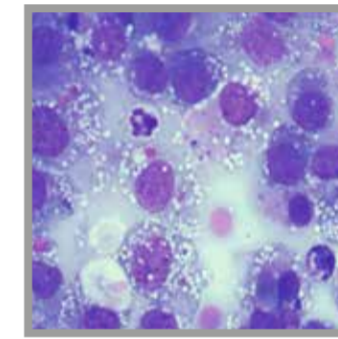
Transmissible venereal tumour, dog



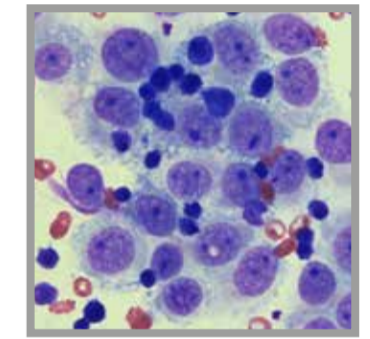
Prominent, atypical nucleoli



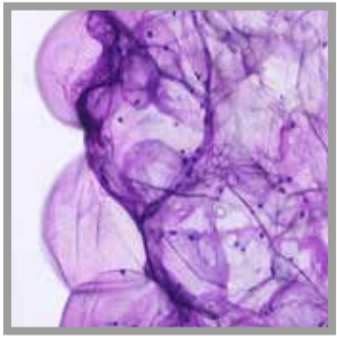
Plasmacytoma, dog



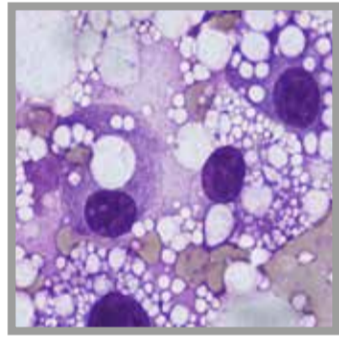
Chemodectoma, cat



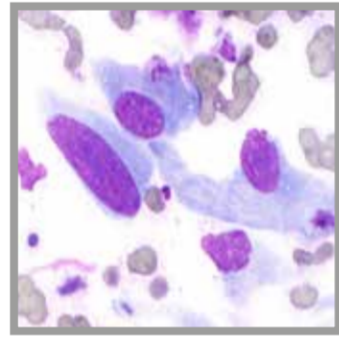
Thymoma, dog



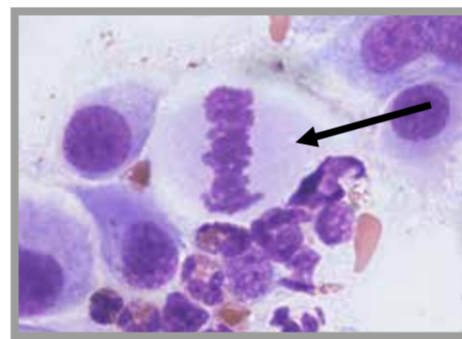
Lipoma, dog



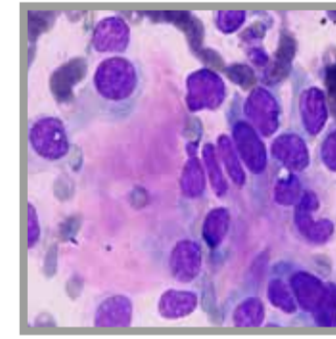
Liposarcoma, dog



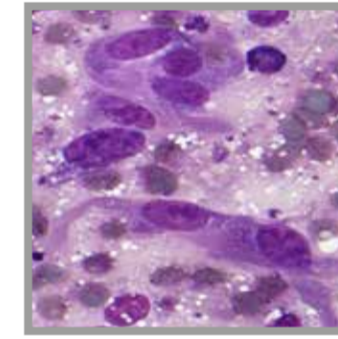
Fibrosarcoma, cat



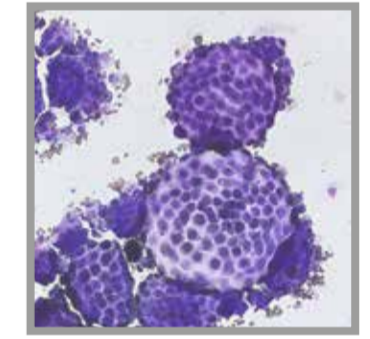
Mitotic figure



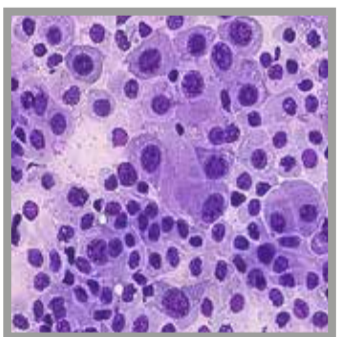
Osteosarcoma, dog



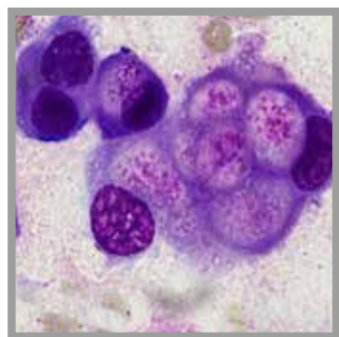
Haemangiosarcoma, dog



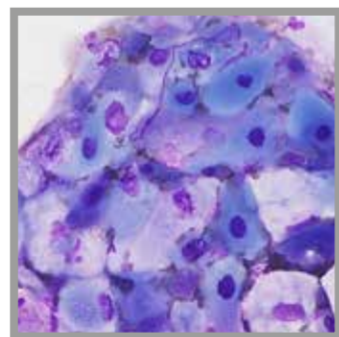
Mesothelioma, cat



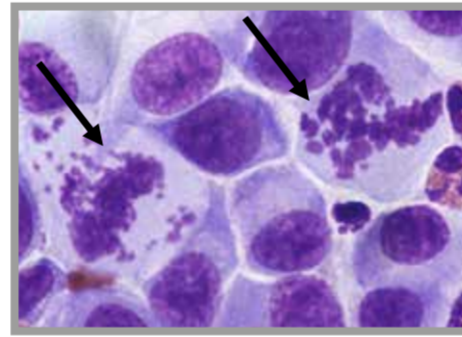
Urothelial carcinoma, dog



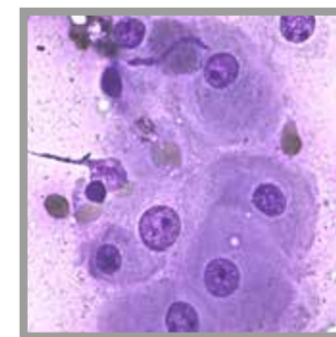
Prostate carcinoma, dog



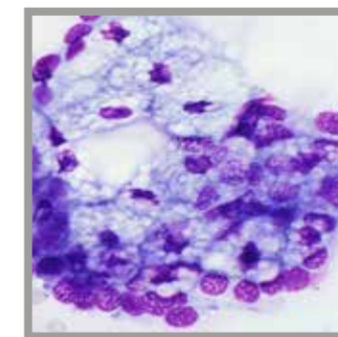
Squamous cell carcinoma, cat



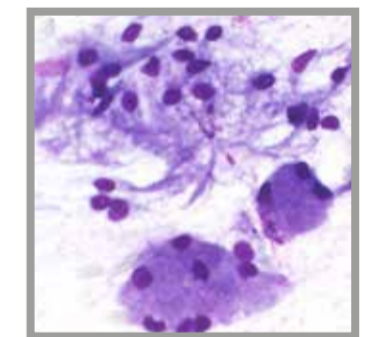
Atypical mitoses



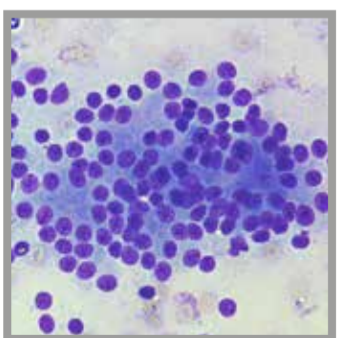
Perianal (hepatoid) adenoma, dog



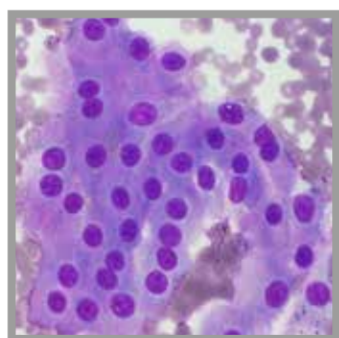
Sebaceous adenoma, dog



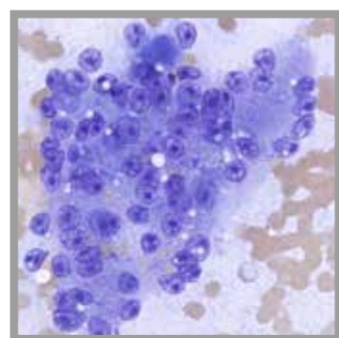
Salivary gland, dog



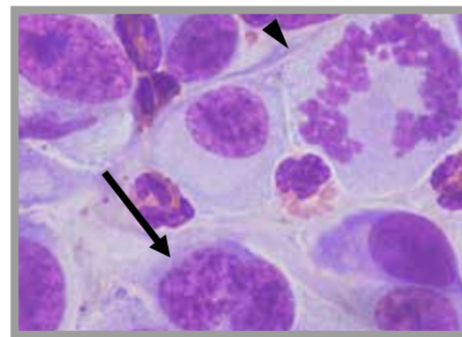
Anal sac apocrine adenocarcinoma, dog



Thyroid carcinoma, dog



Hepatocellular carcinoma, dog



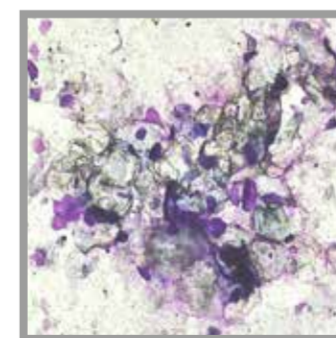
Anisocytosis and anisokaryosis, mitosis (arrowhead), binucleation (arrow)



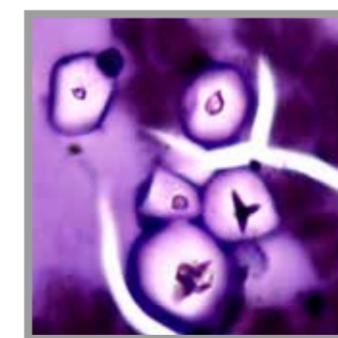
Cytology poster



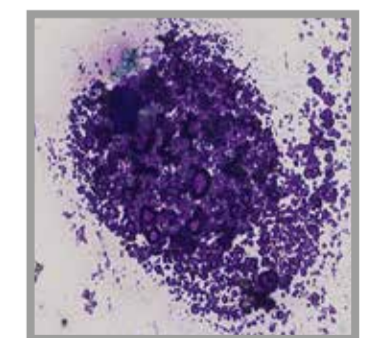
Urinary sediment poster



Hair follicle cyst, dog



Talcum



Ultrasound gel