

PATHOLOGY – PRICING

➔ Histology

Single price

- Tumours (≤ 2 anatomic sites)
- Skin punches for dermapathology (irrespective of the numbers of biopsies)
- Endometrial biopsies
- Biopsies of different organs ≤ 3
- Biopsies from gastrointestinal tract (irrespective of the number of samples)
- Lymph nodese (irrespective of the number of samples)

Special stainings are included

Examples single price

2 separate mammary complexes or 2 mammary complexes

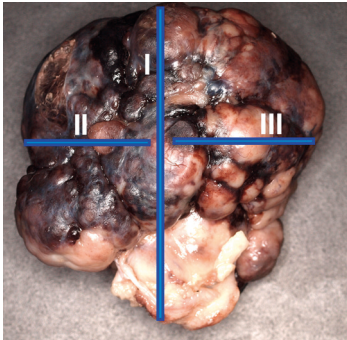
in one sample irrespective of the excision site

(with or without regional lymph node) _____ single price

2 cutaneous tumours/nodules _____ single price

3 liver biopsies _____ single price

1 tumour with up to 3 separate biopsies of the tumour margins _____ single price



simple tumour diagnostic (three trim lines highlighted in blue) e.g. marginally resected tumours (see picture)

Increased effort

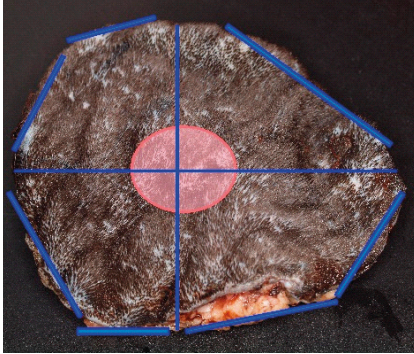
- Entire organs (e.g. spleen, liver, testicle, eye etc.)
- Tumours (> 3 anatomic sites)
- Decalcifications (e.g. digits, nails, bones)
- Uterus with ovaries
- Biopsies of 4 - 6 organs
- Mammary gland (3 – 5 complexes)
- Tumour with wide margins/tumour bed biopsies
(e.g. mast cell tumour requiring detailed assessment of surgical margins)

As of: October 2023
Image source: Laboklin GmbH & Co. KG

➔ Histology

Examples increased effort

Mammary strip (with or without lymph nodes).....increased effort
Mammary strip plus 1 additional complex from the opposite site.....increased effort
Samples for example from stomach, intestine, pancreas, lymph node.....increased effort



Detailed assessment of surgical margins, incl. tumour bed biopsies, if requested (trim lines in blue)

Prices for separate clinical problems

- Example double single price: skin tumour and skin biopsies
- Example single price and increased effort price: liver biopsy and entire digit

Immunohistology after pathohistological diagnosis, e.g.

- Lymphoma typing CD3/CD20
- Expression of Ki-67, c-KIT (mast cell tumour)

➔ Cytology

Single price

- 1 anatomic site (≤ 4 smears)
- 2 anatomic sites (≤ 3 smears per site)
- fluid/ lavage + 2 smears

Increased effort

- 1 anatomic site (5 - 6 smears)
- 2 anatomic sites up to 4 smears each
- Multiple fluids
- 2x single price with more smears/fluids

Prices for separate clinical problems

- See histology

Digital cytology

- See „My Lab“: <https://app.laboklin.com/imageAnalysis>

NOTE: For up-to-date prices see current submission forms. We reserve the right to adjust prices for very large entries.