

HISTOLOGY

Single price

- tumours (≤ 2 anatomic sites)
- skin punches for dermapathology (irrespective of the numbers of biopsies)
- endometrial biopsies
- biopsies of different organs ≤ 3
- biopsies from gastrointestinal tract (irrespective of the number of samples)
- lymph nodes (irrespective of the number of samples)

Special stainings are included

EXAMPLES

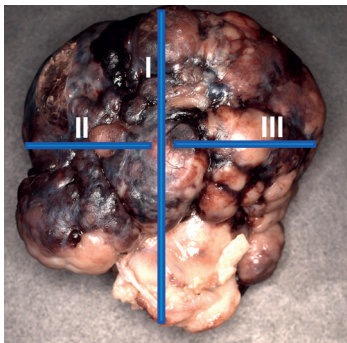
2 separate mammary complexes or 2 mammary complexes
in one sample irrespective of the excision site

(with or without regional lymph node) _____ single price

2 cutaneous tumours/nodules _____ single price

3 liver biopsies _____ single price

1 tumour with up to 3 separate biopsies of the tumour margins _____ single price



simple tumour diagnostic (three trim lines highlighted in blue)
e.g. marginally resected tumours (see picture)

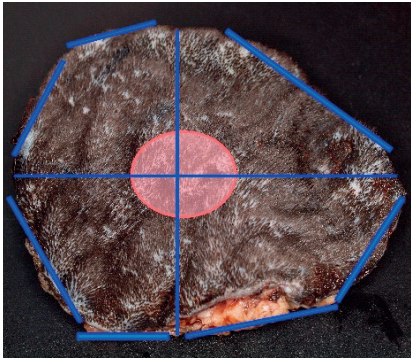
Increased effort

- entire organs (e.g. spleen, liver, testicle, eye)
- tumours (≥ 3 anatomic sites)
- decalcifications (e.g. digits, nails, bones)
- uterus and ovaries
- organ biopsies (≥ 4 organs)
- mammary gland (≥ 3 complexes)
- tumour with wide margins or tumour and separately submitted margins/tumour bed biopsies
- (e.g. mast cell tumour requiring detailed assessment of surgical margins)

HISTOLOGY

EXAMPLES

mammary strip (with or without lymph node) _____ increased effort
mammary strip plus 1 additional complex from the opposite site _____ increased effort
samples for example from stomach, intestine, pancreas, lymph node _____ increased effort (x1)



Detailed assessment of surgical margins, incl. tumour bed biopsies, if requested (trim lines in blue)

Prices for separate clinical problems

- e.g. 1 skin tumour and skin biopsies (2x single price)
- e.g. liver biopsy and entire digit (1x single price plus increased effort)

CYTOLOGY

Single price

- 1 anatomic site (≤ 4 smears)
- 2 anatomic sites (≤ 3 smears per site)
- 1 fluid and ≤ 2 smears

Increased effort

- one anatomic site (≥ 5 smears)
- 2 anatomic sites (≤ 4 smears from one anatomic site)
- ≥ 3 anatomic sites (irrespective of number of smears per site)
- multiple fluids
- 2x single price with more smears/fluids

Prices for separate clinical problems

- see histology

Digital cytology

- see Laboklin-website: (<http://app.laboklin.com>)