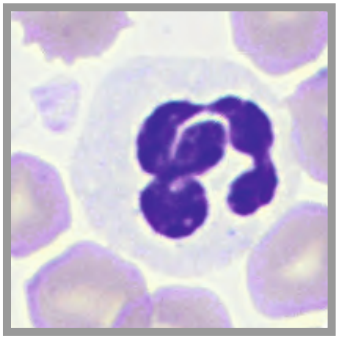
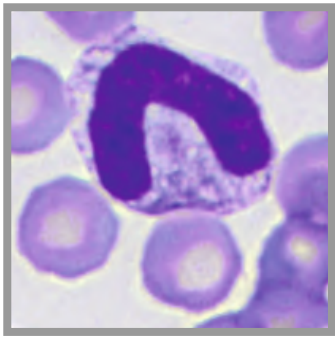


HAEMATOLOGY

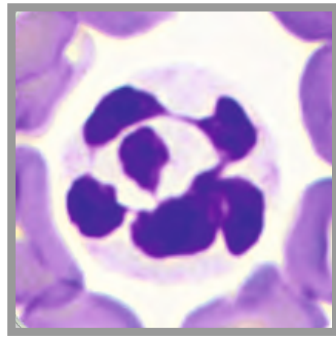
→ Dog



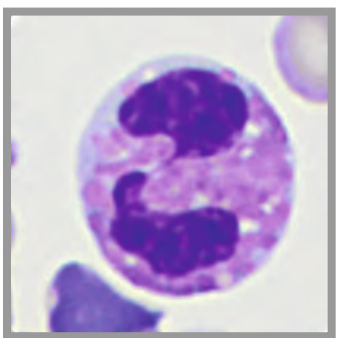
Segmented neutrophil



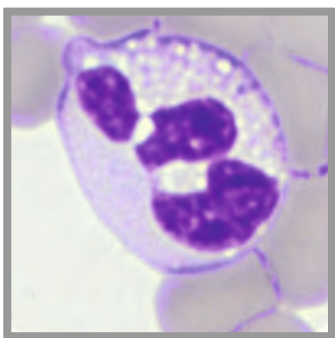
Band neutrophil



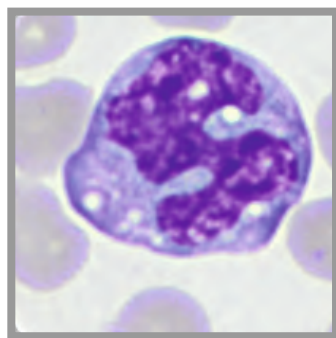
Hypersegmented neutrophil



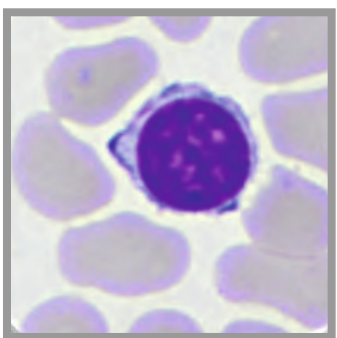
Segmented eosinophil



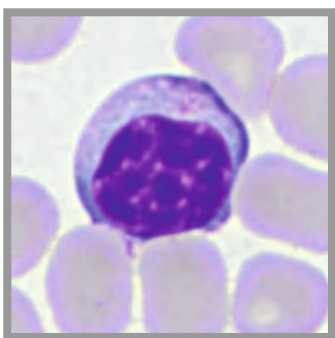
Segmented eosinophil (sighthound)



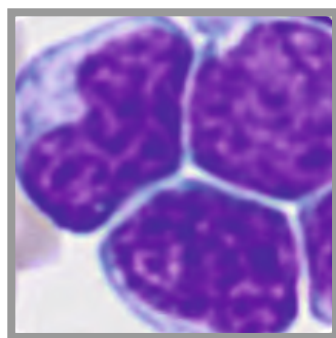
Activated monocyte



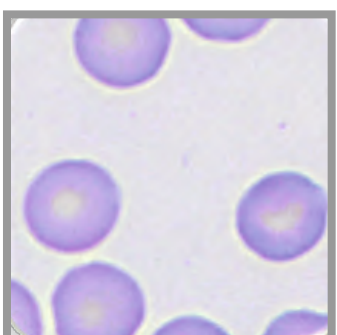
Small lymphocyte



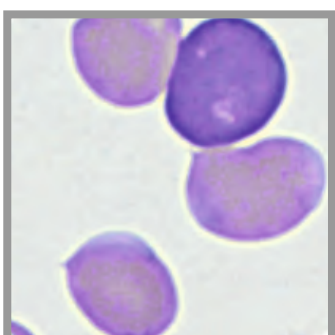
Small reactive lymphocyte



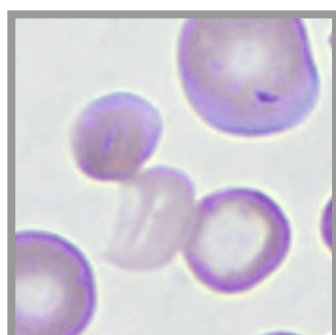
Large, atypical neoplastic lymphocytes



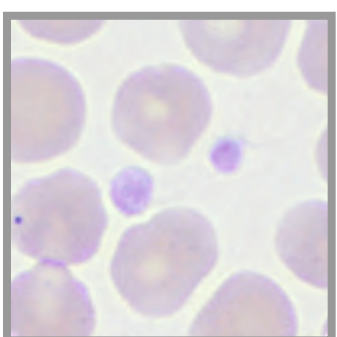
Normal erythrocytes



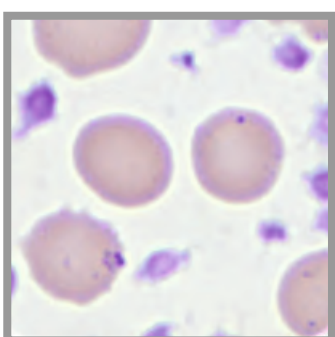
Polychromasia



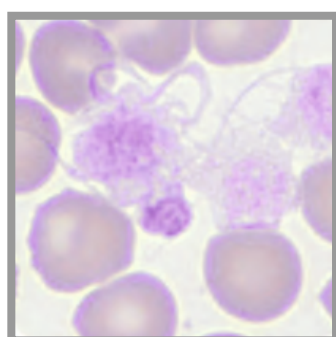
Anisocytosis



Normal platelets

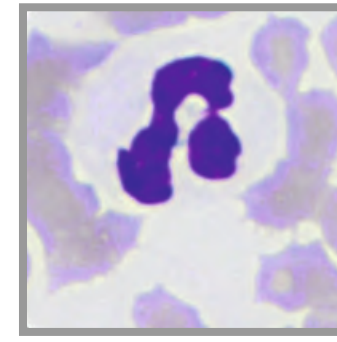


Thrombocytosis

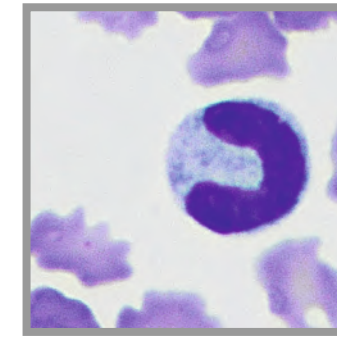


Macroplatelets

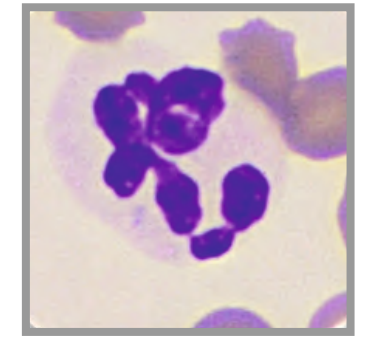
→ Cat



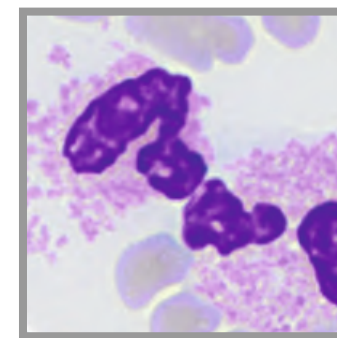
Segmented neutrophil



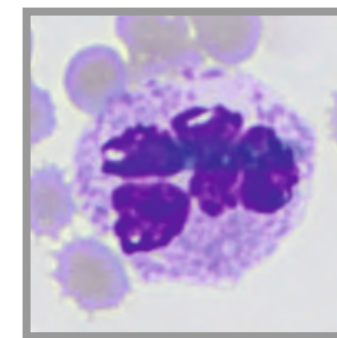
Band neutrophil



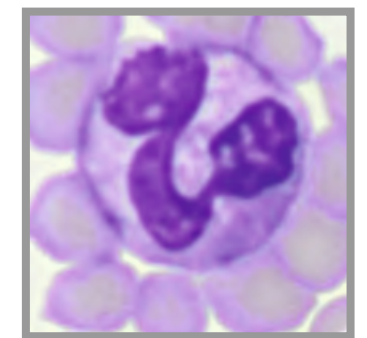
Hypersegmented neutrophil



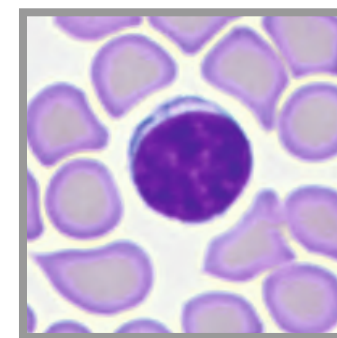
Segmented eosinophils



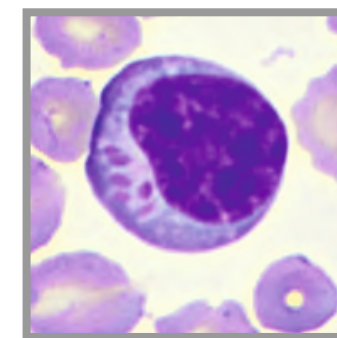
Segmented basophil



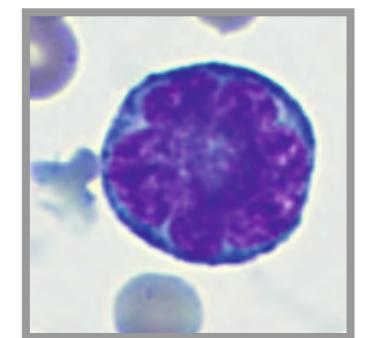
Monocyte



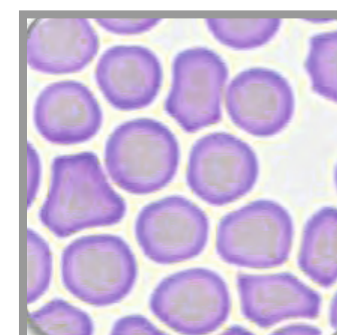
Small, mature lymphocyte



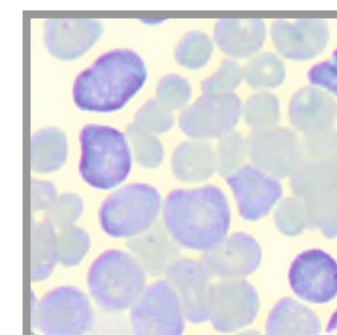
LGL „large granular lymphocyte“



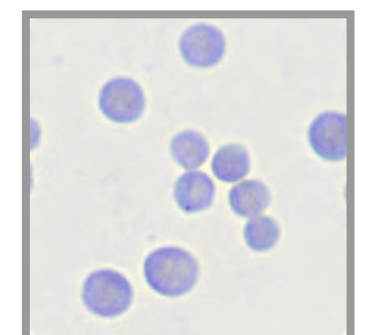
Atypical, likely reactive, medium-sized lymphocyte with intensely basophilic cytoplasm



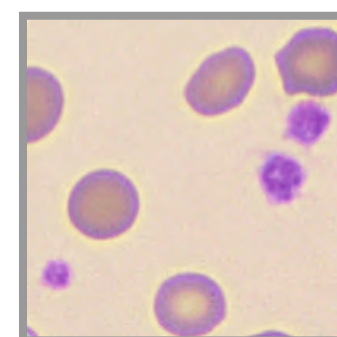
Normal erythrocytes



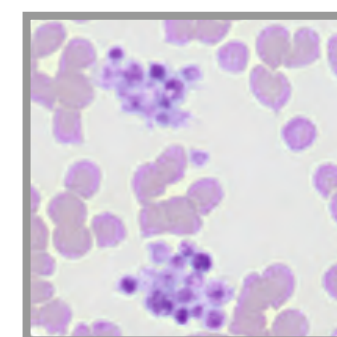
Polychromasia



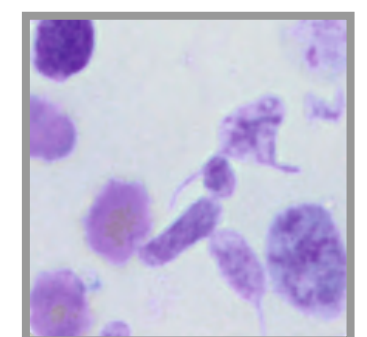
Anisocytosis



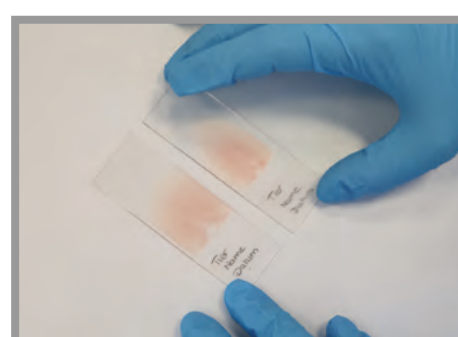
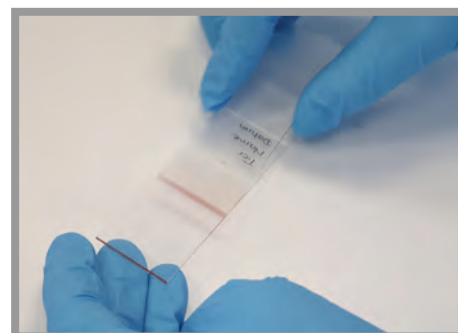
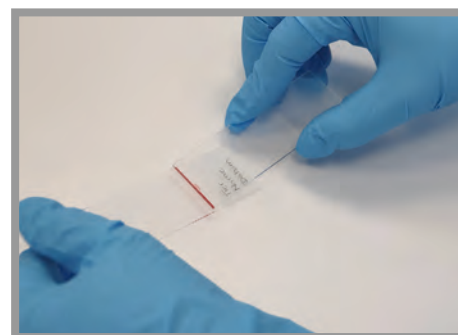
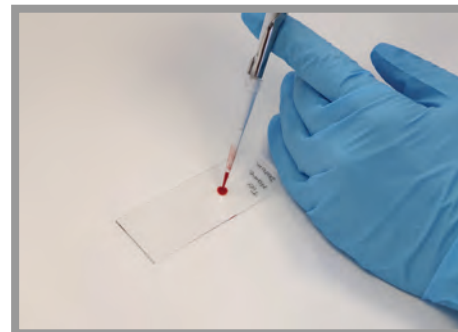
Normal platelets



Platelet clumping



Atypical platelets



blood smear



staining process

As of: December 2022, Picture credits: Laboklin