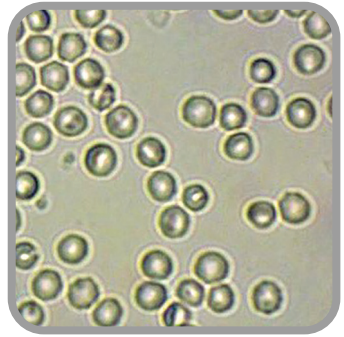
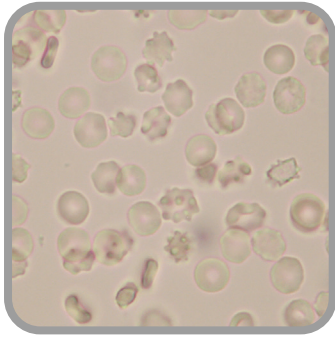


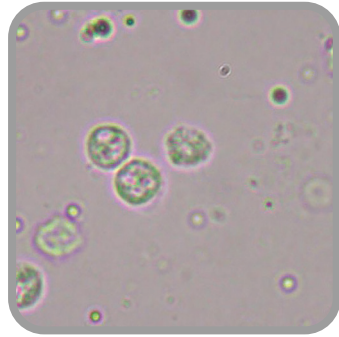
Urinary Sediment LABOKLIN



Erythrocytes



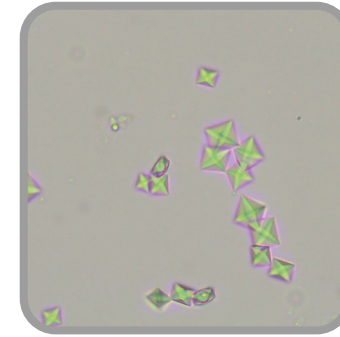
Acanthocytes



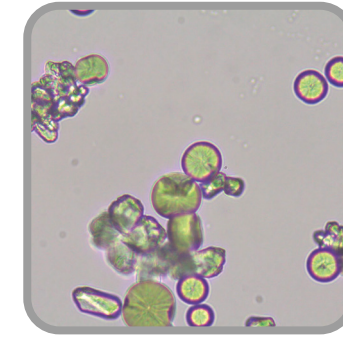
Leukocytes



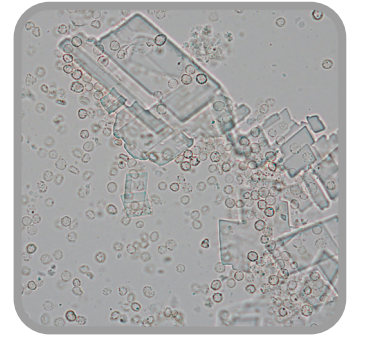
Equipment for urinalysis



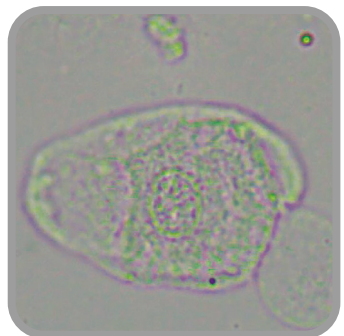
Calcium oxalate



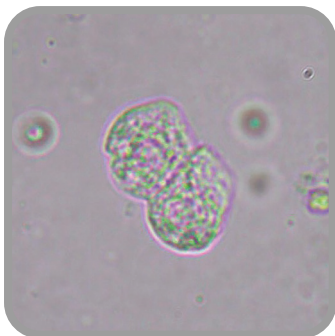
Calcium carbonate



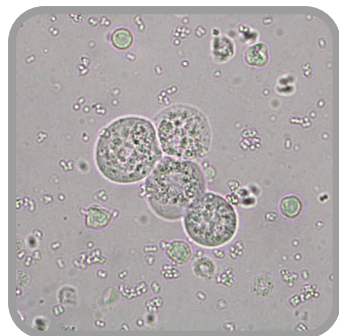
Cholesterol crystals



Squamous epithelial cell



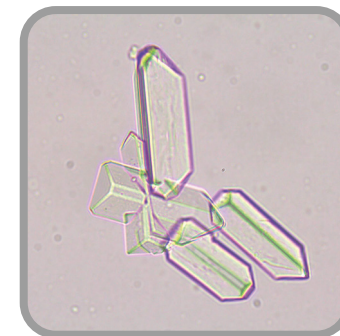
Transitional epithelial cells



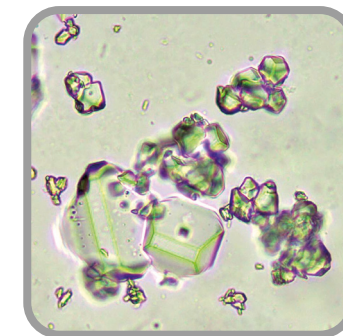
Epithelial cells, leukocytes and bacteria



Mix the urine sample gently at room temperature until the sediment is dissipated.



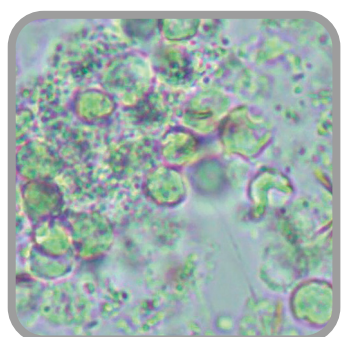
Struvite crystals



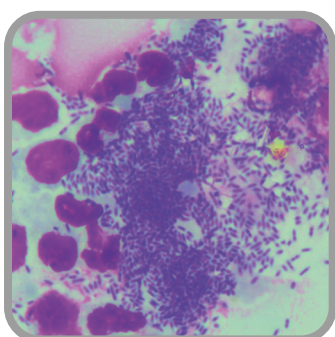
Struvite crystals in dissolution



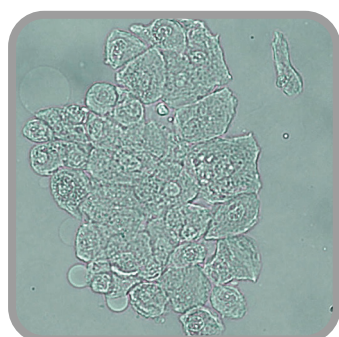
Ammonium urate



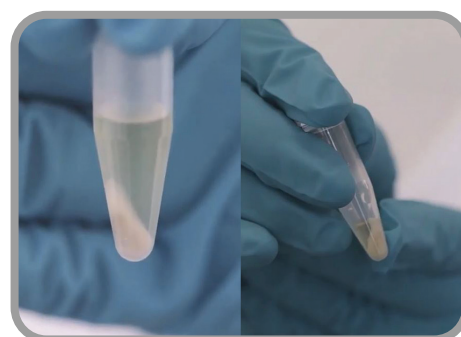
Leukocytes, bacteria and bilirubin crystals - unstained



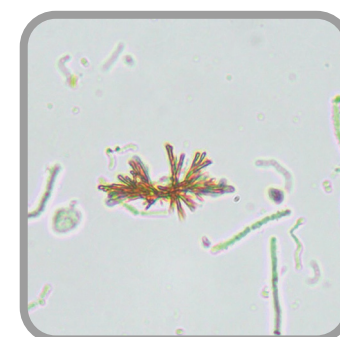
Leukocytes, bacteria and bilirubin crystals - stained



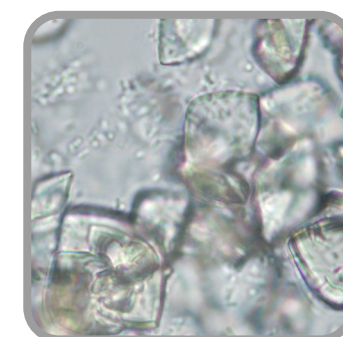
Conglomeration of desquamated epithelial cells - unstained



Centrifuge the urine sample at 400 g for 5 minutes to concentrate the sediment at the bottom of the tube.



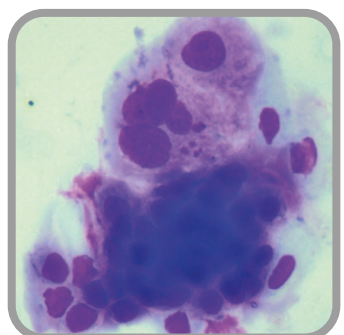
Bilirubin crystals



Uric acid crystals



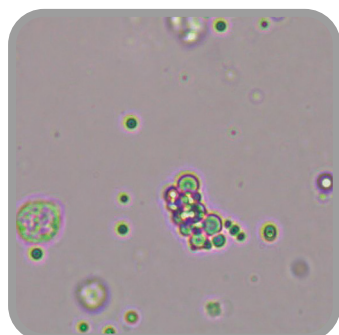
Cystine crystals



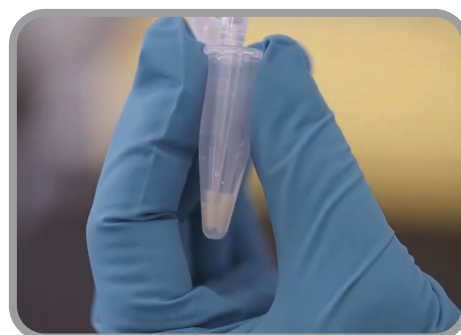
Conglomerate of desquamated epithelial cells - stained: bladder cancer



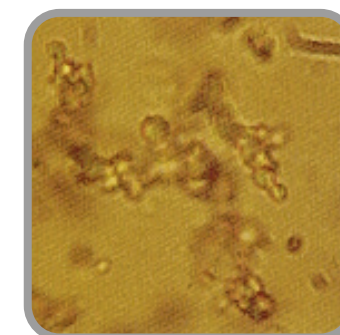
Granular cast



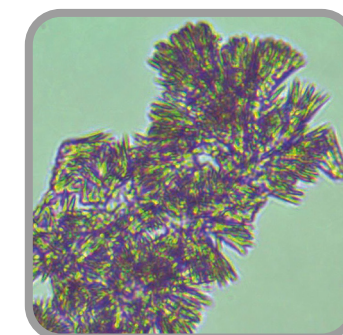
Leukocyte and fat droplets



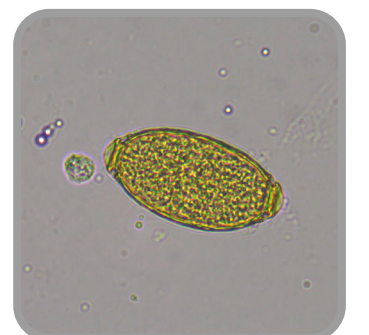
Discard supernatant by decanting and resuspend the remaining material carefully by gently shaking the tube.



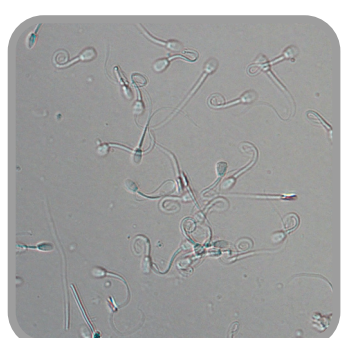
Xanthin crystals



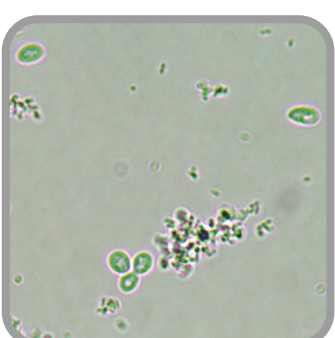
Needle-like crystals - often induced by medication



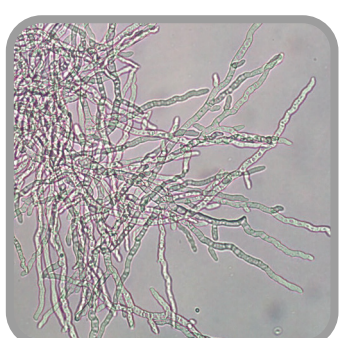
Capillaria plica



Sperm



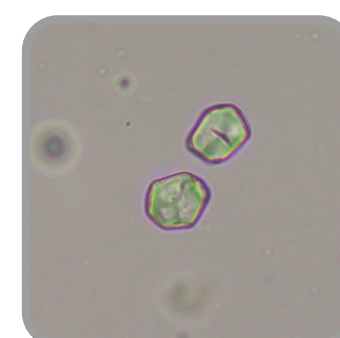
Yeasts and bacteria



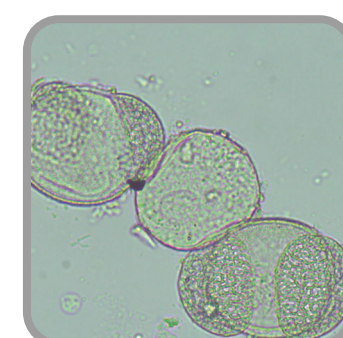
Fungal hyphae



One drop of the fluid is microscopically examined using a low (10 x and 20 x) and then a high power (40 x) lens.



Starch granules



Pollen



Fibre

www.laboklin.com

As of: February 2020

D-97688 Bad Kissingen • Steubenstraße 4
Tel. +49-971/7 20 20 • Fax +49-971/6 85 46
E-mail: info@laboklin.com • www.laboklin.com